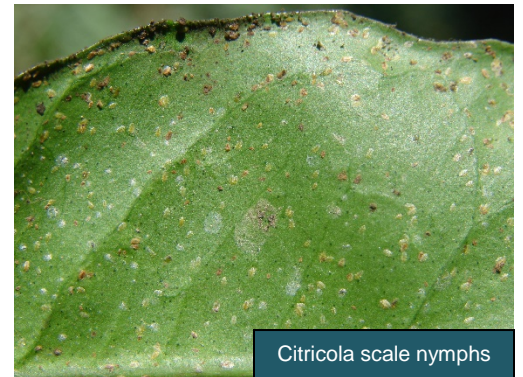


RED SCALE DEGREE DAY ACCUMULATION*

AREA	BIOFIX	DD TOTAL Aug 2, 2018	2750 DD 3 rd CRAWL
Arvin	3/10	2780	8/1
Famoso	3/15	2676	8/4
Lindcove	3/15	2671	8/4
Orange Cove	3/15	2550	8/9
Madera	3/23	2200	8/23

*Temperature data and DD models retrieved from UC IPM websites

FIELD NOTES: The red scale biofix dates above are *only a guide*. Red scale crawlers and white caps have been observed in Kern and Tulare counties. Out of synch generations continue to overlap. Earlier red scale treatments are keeping green fruit clean, but more sprays are being planned for August. Cottony cushion scale are mostly adults with egg sacs; **NOT** a good timing for applying CENTAUR. Barnacle scale and citricola scale nymphs are still susceptible to applications of CENTAUR. Red mite populations crashed in the heat, but two-spotted mites are still being monitored.



Citricola scale nymphs

CENTAUR WDG

- **California Red Scale:** For third generation crawler hatch, **apply at early crawler emergence (2750 DD)** for best control.
- Use Rate: 46 oz/A.
- To improve coverage on the foliage, add spray oil or a high-quality surfactant, following the directions for use on that product's label.
- When timing CENTAUR applications, it is always better to **be early rather than late**. **CENTAUR has 3 weeks of residual activity on red scale crawlers.**
- Applications made Jun–Sep will provide good control of **Citricola Scale**.
- Applications made Jun–Jul will control immature stages of **Cottony Cushion Scale**.

FUJIMITE SC

- **Now has a 3-day PHI for citrus!**
- Apply when mite populations are at treatment thresholds; **also controls ACP nymphs and adults.**
- Use Rate: 2 to 4 pts/A; add **415 oil**
- Good coverage is essential for control. **USE A MINIMUM OF 200 GPA** and a tractor ground speed (less than 2 mph) that allows for complete coverage.

NOTE: The above field observations are given as general comments to help in treatment decisions. Individual field conditions can vary widely. Monitor individual fields carefully.

West SJV
East SJV
No. Central Valley
Account Manager

Greg Miller
Ben Letizia
Cash Cadena
John Hubbard

(480) 993-9664
(559) 554-6114
(559) 469-3112
(559) 707-7377

gmiller@nichino.net
bletizia@nichino.net
ccadena@nichino.net
jhubbard@nichino.net