



Unique Mode of Action for Powdery Mildew Control

APPLE / CHERRY

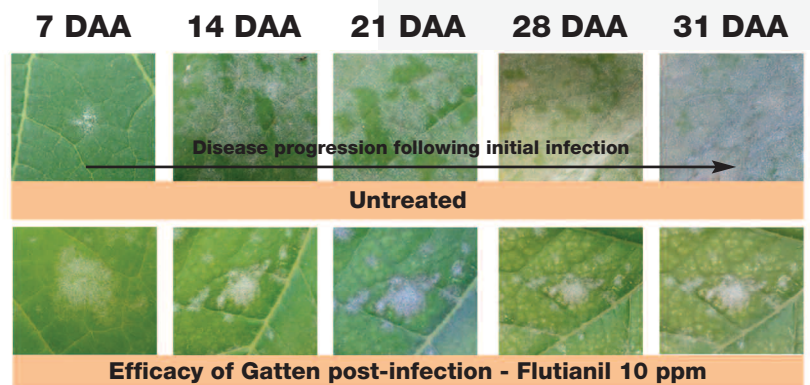
Gatten® fungicide delivers powerful, cost effective powdery mildew control. The active ingredient in Gatten, flutianil, inhibits the powdery mildew pathogen from absorbing nutrients from the host plant, making it impossible for the pathogen to grow and expand. With its unique mode of action, Gatten offers a new rotational tool for resistance management programs.

Key Benefits

- New, unique mode of action for powdery mildew control – FRAC Group U13
- No cross resistance with existing fungicides
- Translaminar movement – provides protection to both sides of the leaf
- Inhibits formation of haustorium, the structure that allows the fungus to extract nutrients from the plant cell
- Inhibits formation of the secondary hyphae and limits the development and dispersion of viable spores, helping to break the disease lifecycle
- Demonstrates a high level of efficacy similar or better compared to current standard fungicides
- IPM compatible – nontoxic to most nontarget organisms, including bees
- Excellent rotational partner for powdery mildew resistance management programs

Use Information

- Formulation: 5% Emulsifiable concentrate (EC)
- Application Method: Ground only
- Minimum Water Volume: 30 gallons per acre; use adequate spray volume to obtain thorough coverage
- Application Rate: 6.0 to 8.0 fl oz per acre; use high quality spreader
- Application Timing: Prebloom through summer cover sprays
- Maximum Applications: 4 applications per year
- Minimum Retreatment Interval: 7 days
- Resistance Management: Do not make more than 2 consecutive applications of Gatten.
- Reentry Interval (REI): 12 hours
- Preharvest Interval (PHI):
 - Apple: 14 days
 - Cherry: 3 days



This diagram illustrates the efficacy of Gatten applied after infection. Gatten stops the expansion of an existing infection.

NICHINO
AMERICA®