

CENTAUR® WDG RED SCALE UPDATE™

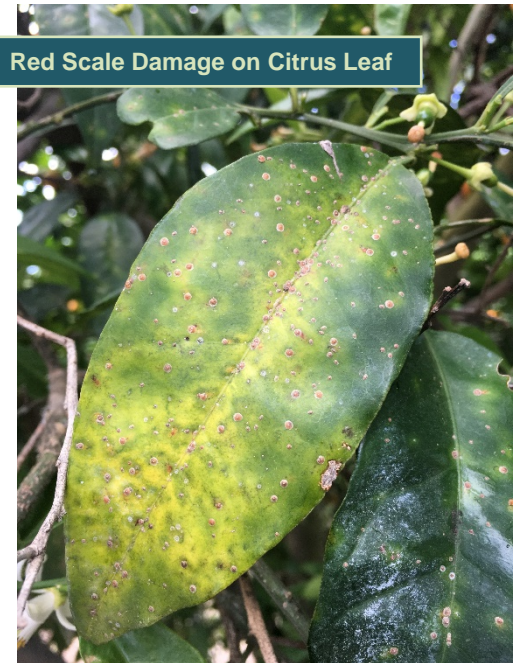
June 7, 2017
ISSUE #4

RED SCALE DEGREE DAY ACCUMULATION*

AREA	BIOFIX	DD TOTAL 6/07/17	1650 DD 2 nd CRAWLER
Arvin	3/13	1188	6/25
Famoso	3/13	1110	6/28
Lindcove	3/13	1144	6/30
Parlier	3/13	1114	7/02

*Temperature data and DD models retrieved from UC IPM websites

FIELD NOTES: The red scale biofix dates above are *only a guide*. The 2nd red scale flight started this week, and PCAs are wrapping up the placement of their traps. Citricola scale and cottony cushion scale crawlers continue to emerge from adult females and are settling on leaves as 1st instar nymphs. Barnacle scale eggs began hatching this week, but crawlers have not yet migrated to the leaves. Citrus thrips retreatments continue in orchards with smaller fruit that is still susceptible. Red mites and two-spotted mites are being controlled by predator mites in most blocks; miticides have been applied on a few ranches. There have been reports of heavy earwig and false chinch bug infestations this season.



CENTAUR WDG

- **Apply at early crawler emergence (1650 DD)** for the best California red scale control.
- Use 46 oz/A.
- To improve coverage on the foliage, add spray oil or a high-quality surfactant, following the directions for use on that product's label.
- When timing CENTAUR applications, it is always better to **be early rather than late**. **CENTAUR has 3 - 4 weeks of residual activity on red scale crawlers.**
- CENTAUR has excellent activity on citricola scale. Applications made in June - September will provide good control. June to July applications also control immature stages of cottony cushion scale.

FUJIMITE SC

- Apply when mite populations are at treatment thresholds; **also controls ACP nymphs and adults.**
- Use 2 to 4 pts/A. Add 415 oil or a high-quality surfactant.
- Good coverage is essential for control. **USE A MINIMUM OF 200 GPA** and a tractor ground speed (2 mph or less) that allows for complete coverage.

NOTE: The above field observations are given as general comments to help in treatment decisions. Individual field conditions can vary widely. Monitor individual fields carefully.

John Hubbard	Strategic Grower Account Manager	559-707-7377	Fresno/Tulare/Kern Counties
Ben Letizia	Technical Sales Representative	559-554-6114	Fresno/Tulare/Kern Counties